



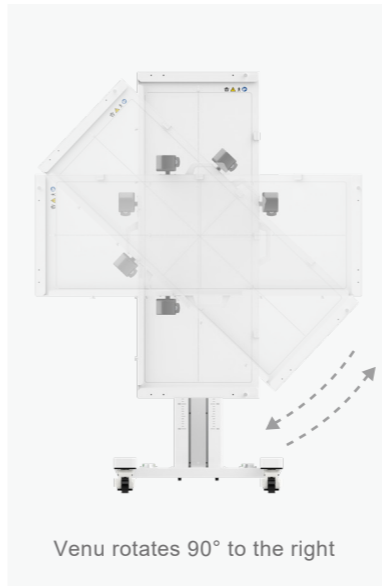
Whole body X-ray series

Venu 1748V

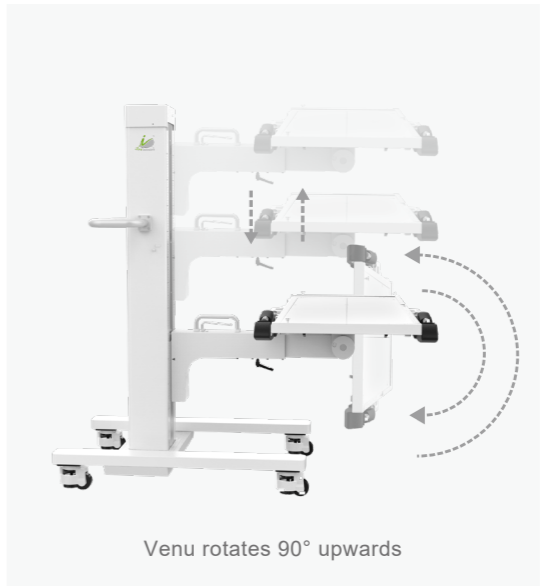


Suitable for hospitals | medical clinics

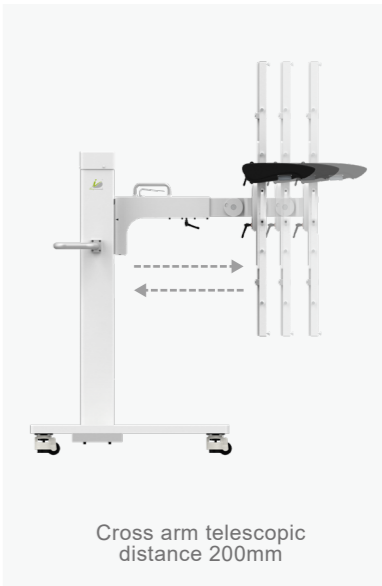
Product features



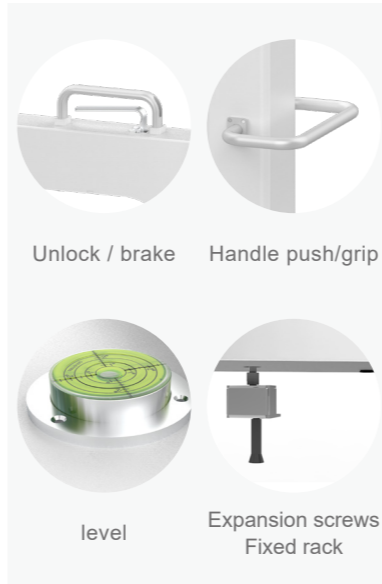
Venu rotates 90° to the right



Venu rotates 90° upwards



Cross arm telescopic distance 200mm



Unlock / brake Handle push/grip level Expansion screws Fixed rack



Cross arm movement range 350-1350mm

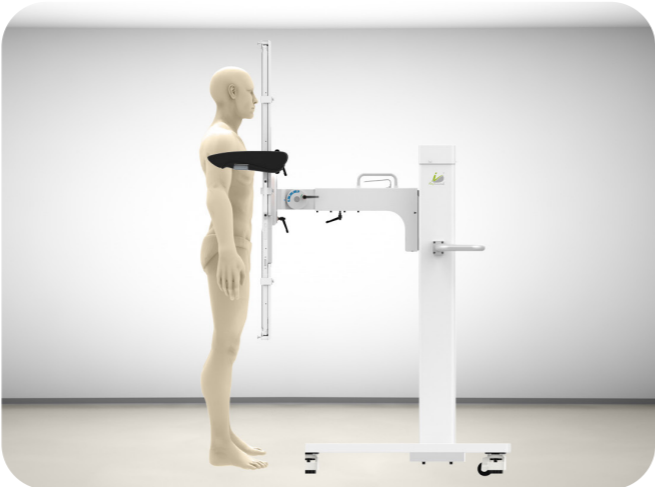


Armrest swivel 90° / up/down adjustment 100mm

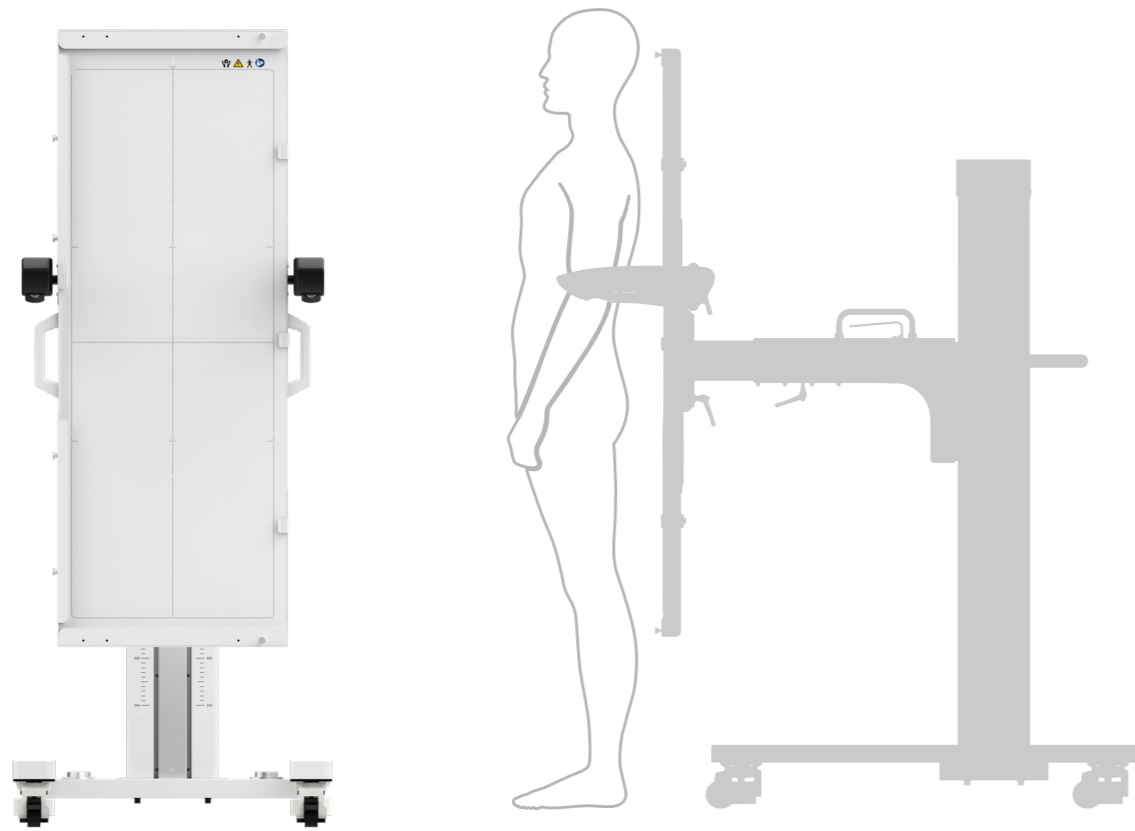
Introduction

Whole body radiographic imaging system

The Venu 1748 optimises the workflow and reduces patient dose. Large areas can be imaged with a single exposure for the full spine and extremities. Potential suture misalignments are eliminated, improving diagnostic confidence, portability and the ability to acquire images in either an upright or supine position. The Venu 1748 uses high sensitivity technology and can be easily connected and synchronised with X-ray equipment.



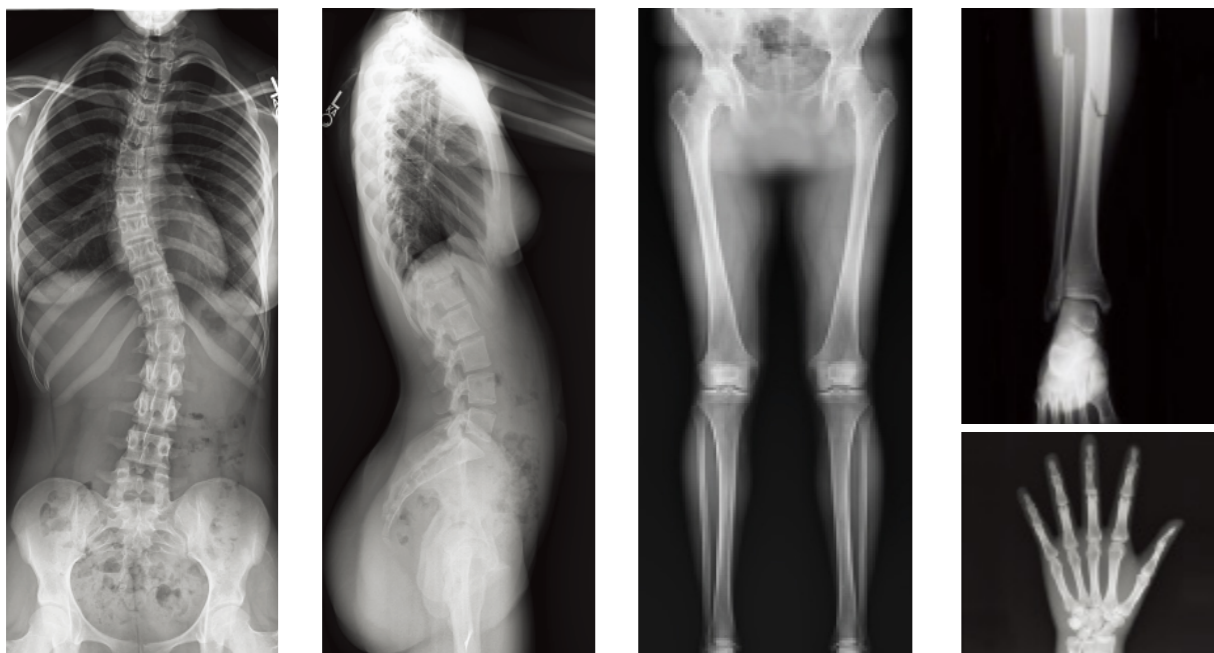
Application



Specifications

Product Mode	LLI
Detector	
Type	Venu1748V
Detector Technology	Amorphous Silicon
Resolution	3.6 lp/mm
Active Matrix	3064 × 8696 pixels
Pixel Pitch	139μm
Active area	425 × 1208mm
Interface	1G Ethernet
frame	
Rack size	950 x 680 x 1452mm
Cross arm range of motion	350-1350mm
Horizontal arm telescopic	200mm
Venu armrests	Level: 100mm up and down adjustment / Rotation: 90 degrees
Venu rotation	Front and back: Rotate 90° upward / Right: 90°

Clinical picture



Dimension

